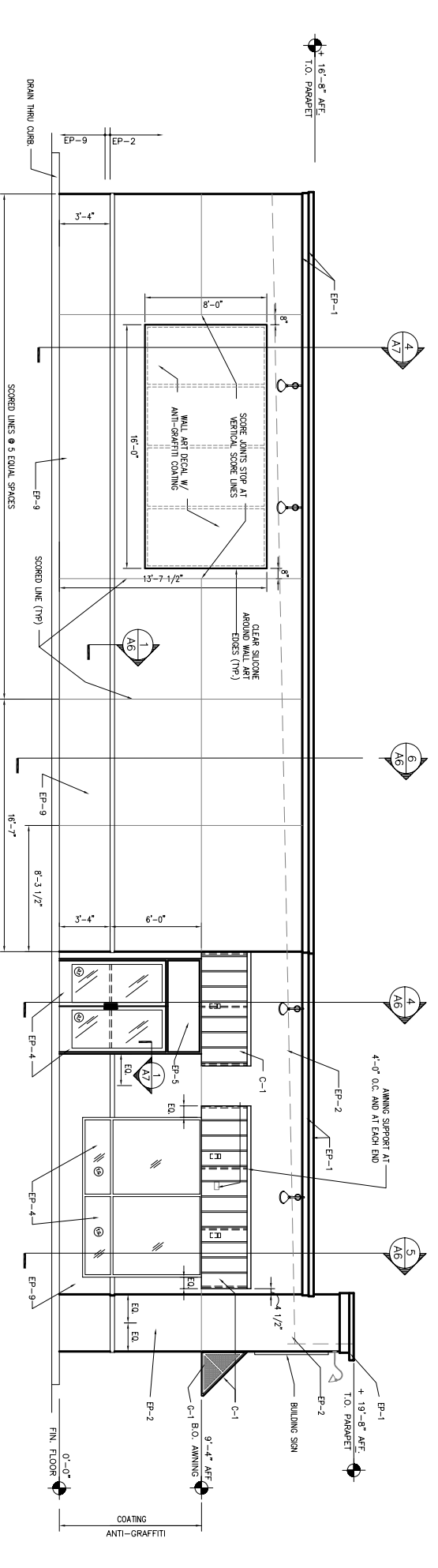


1 RIGHT SIDE ELEVATION (SOUTH) 1/4"=1'-0"

NOTE:
FOR DIMENSIONS CHECK WITH COMPANY DRAWINGS & SPECIFICATIONS WITH NOTE NO. 8 ON SHEET NO. A-1

NOTE: STORMFRONT & ENTRANCE SYSTEM WINDOWS AND DOORS SHALL MEET THE MINIMUM INFILTRATION REQUIREMENTS PER SECTION 116 OF THE IES.



2 LEFT SIDE ELEVATION (NORTH) 1/4"=1'-0"

NOTE: STORMFRONT & ENTRANCE SYSTEM WINDOWS AND DOORS SHALL MEET THE MINIMUM INFILTRATION REQUIREMENTS PER SECTION 116 OF THE IES.